



City-Wide Truck Route Study

Presented by: David Murray, Deputy Director of Community, Housing, and Economic Development

City of San Bernardino



Goals of Truck Route Study

The City-Wide Truck Route Study was developed for the City, as an effort directly related to the larger General Plan update.

The goals of the Study are the following:

- Determine the existing pattern of medium-duty and heavy-duty truck trips.
- Identify the reasons behind those truck trip patterns.
- Determine likely future shifts or increases in those trip patterns from internal or external development.
- Identify potential conflicts - truck routing patterns and local communities.
- Develop an understanding of future development plans in bordering cities and greater Inland Empire
- Prepare truck route system options to balance the need for access, through movement, and community preferences.

Study Elements and Steps

Project Goals

Roadway Network/Volumes

Existing Truck Patterns

Land Use Patterns

Pavement Conditions

Geometric Conditions

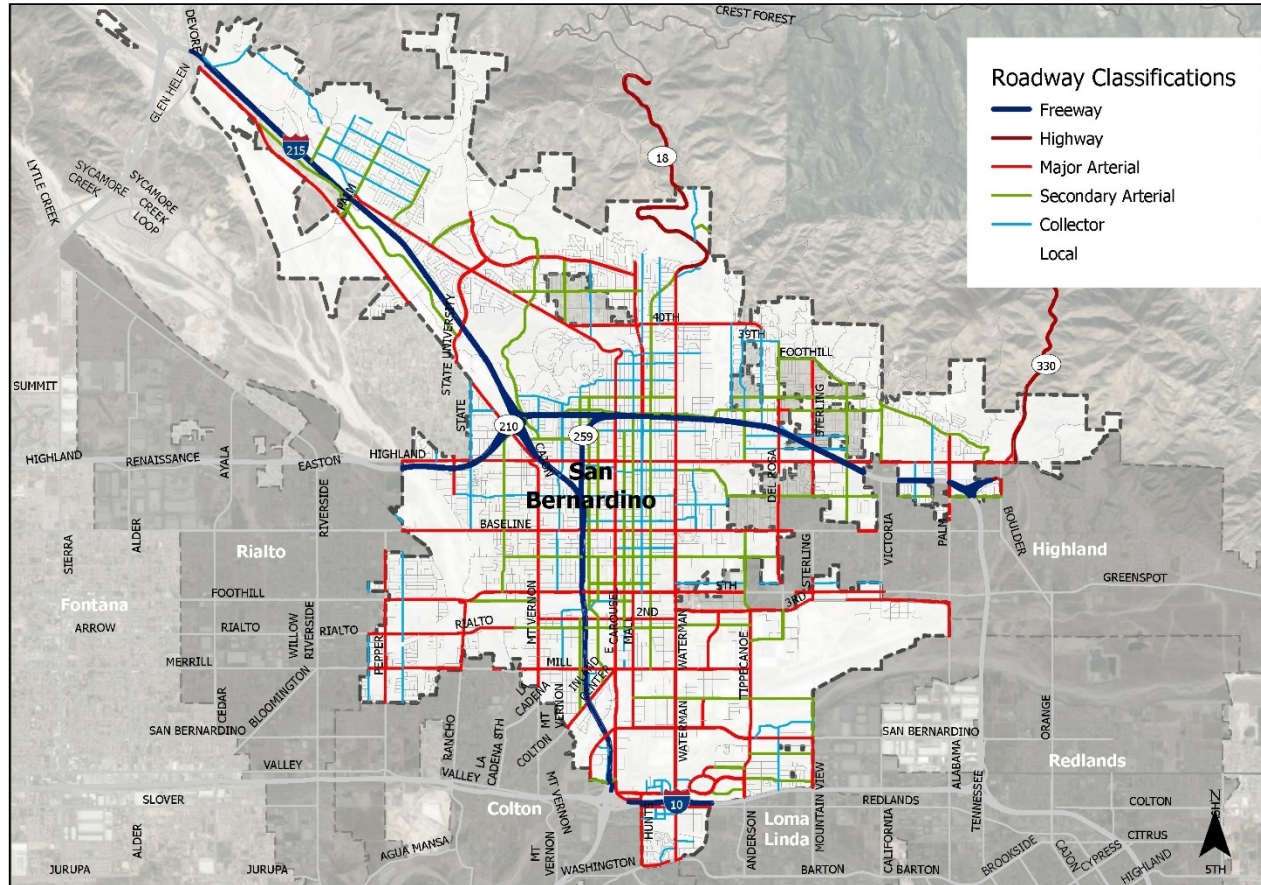
Recommended Routes

Implementation Framework

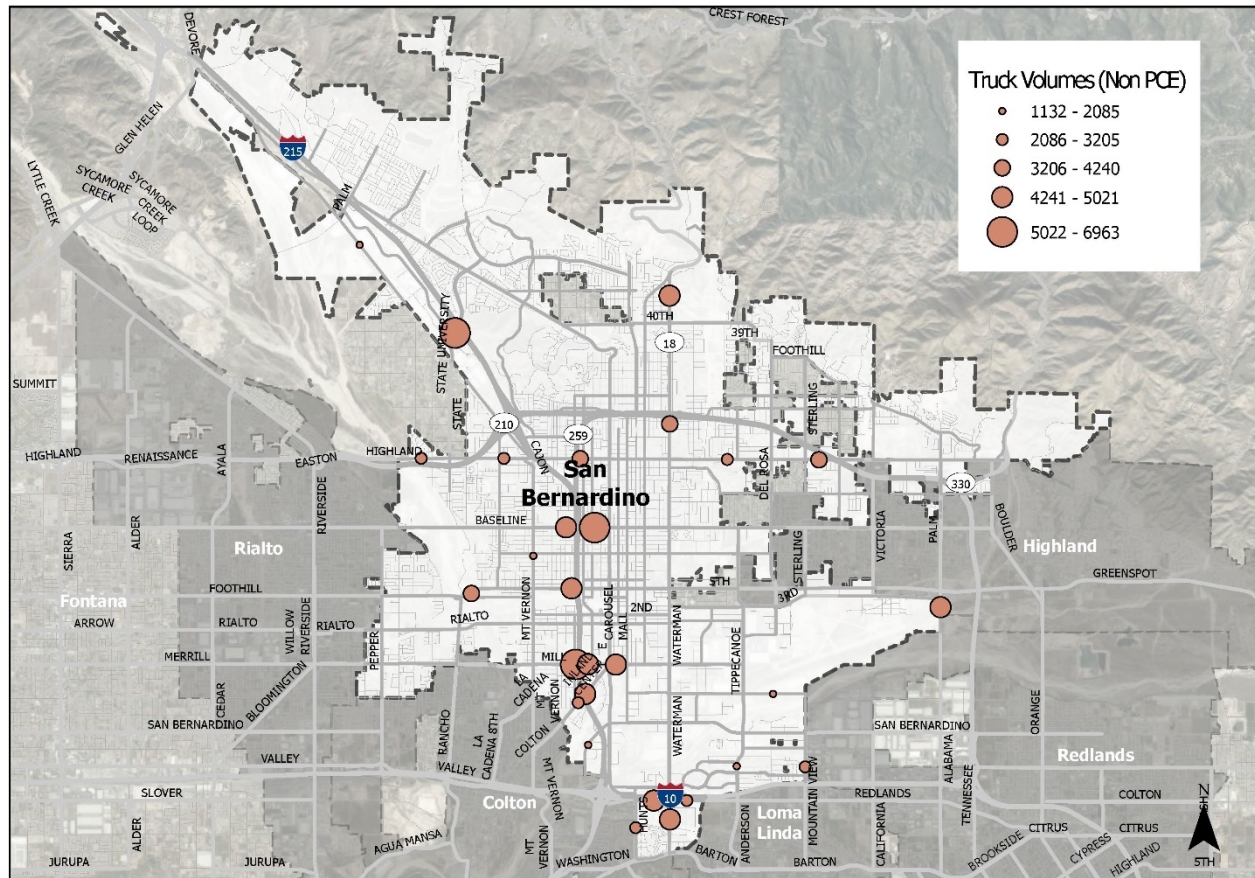
The City-Wide Truck Route Study

- Defines the basis of compliance with federal and California Vehicle Code trucking regulations
- Integrates existing data into analysis
- Supporting the diversion of trucks from residential areas and Downtown
- Defines the regulatory routes – truck travel and parking
- Recommends Municipal Code Changes on Truck Regulations
- Provides framework for regulatory truck route sign placement

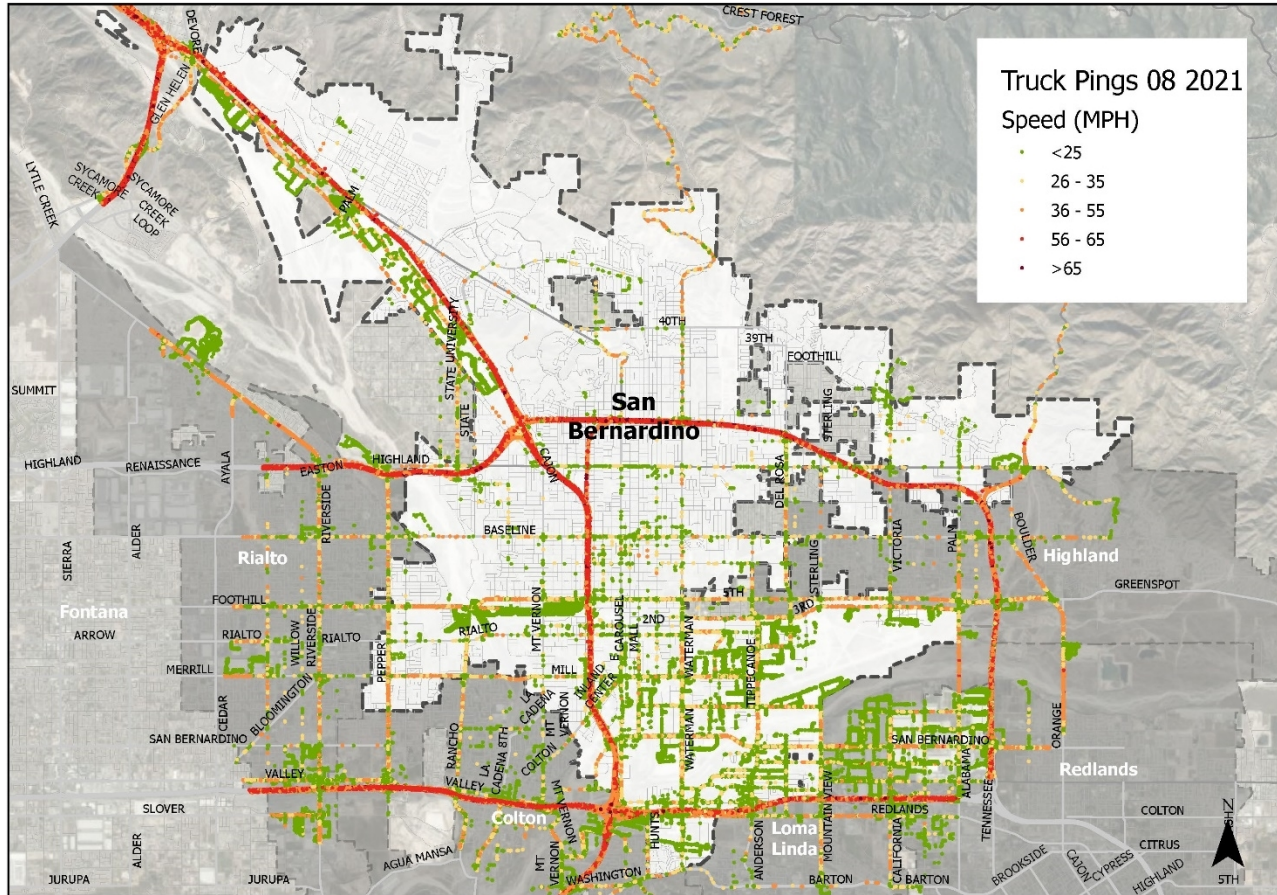
Analysis Element – Roadway Classifications



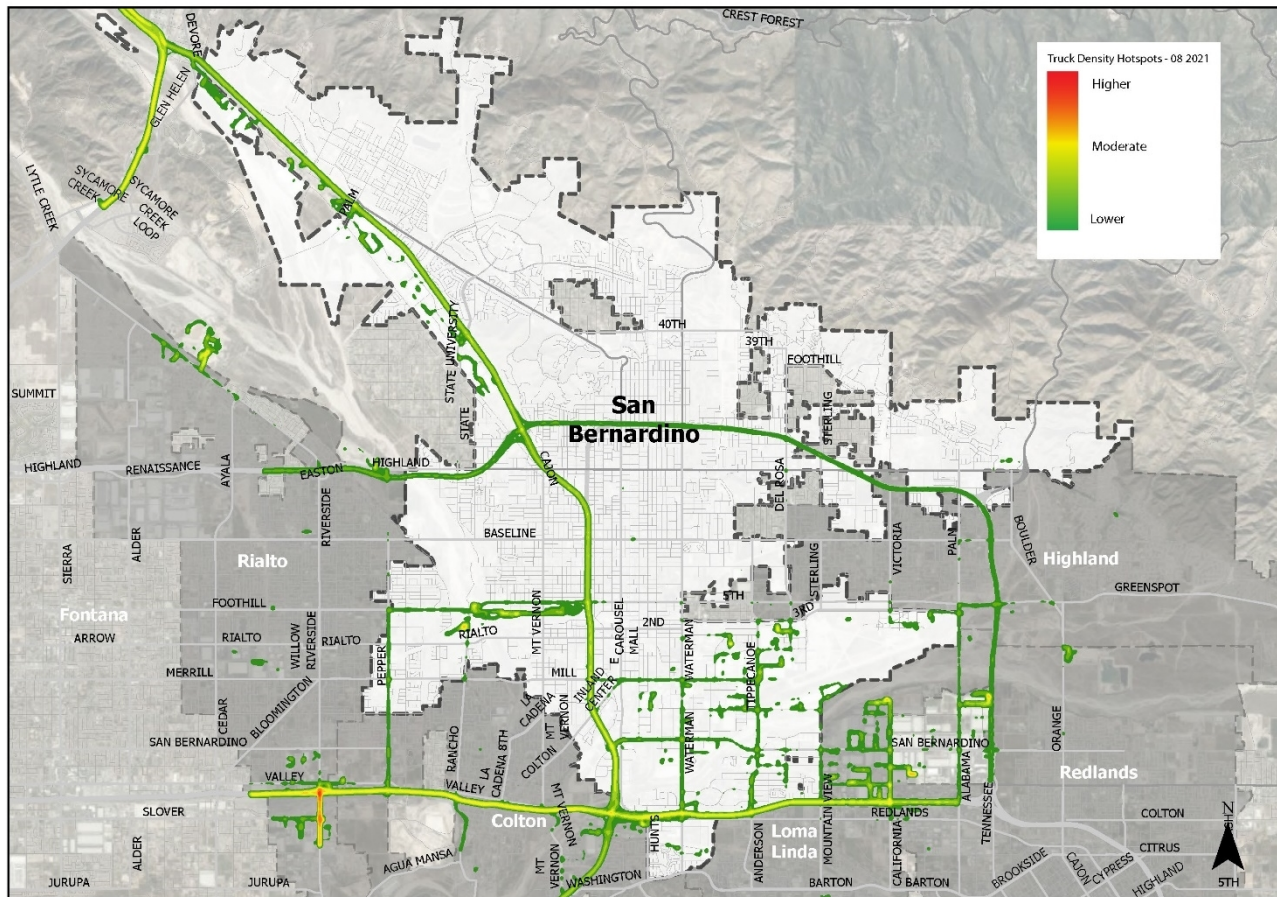
Analysis Element – Existing Truck Volumes



Analysis Element – Existing Truck Activity

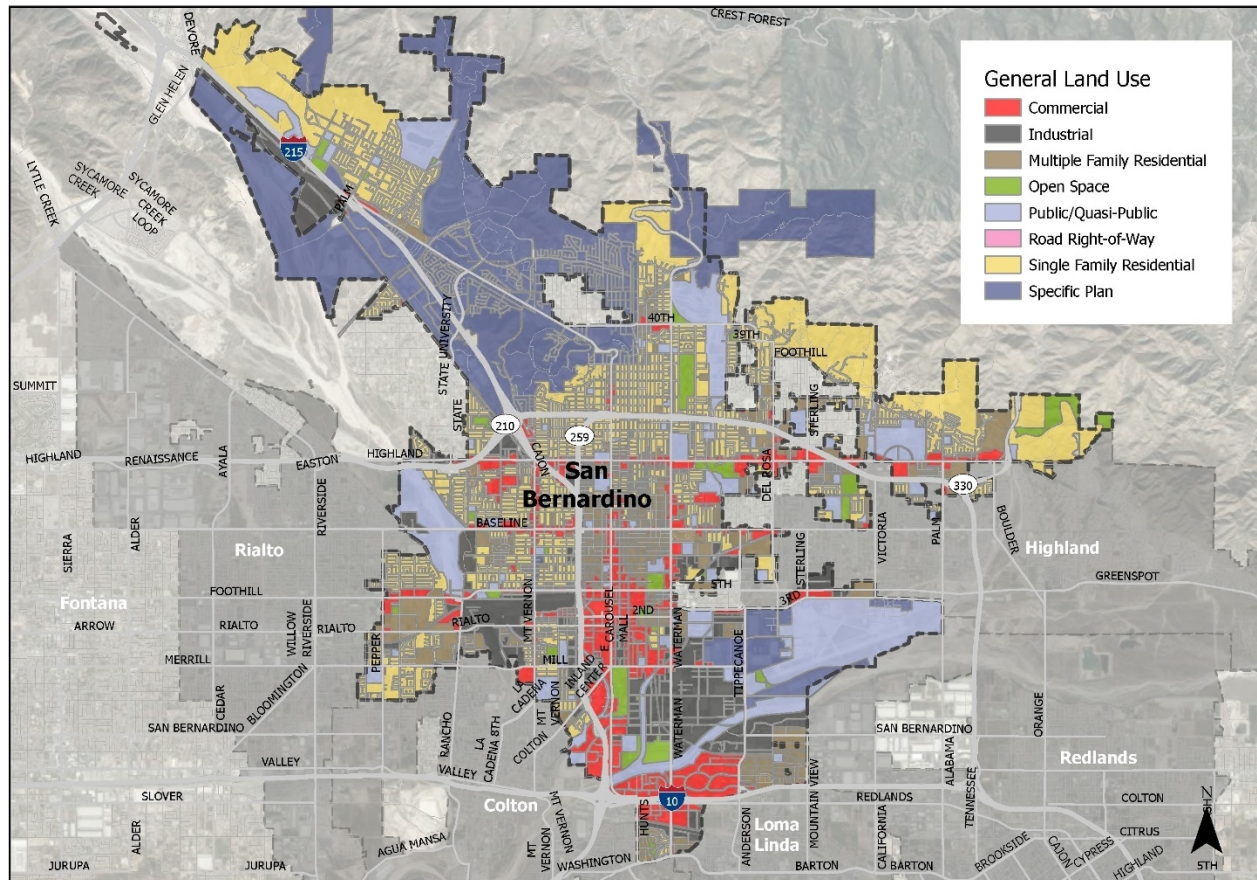


Analysis Element – Existing Truck Trip Density

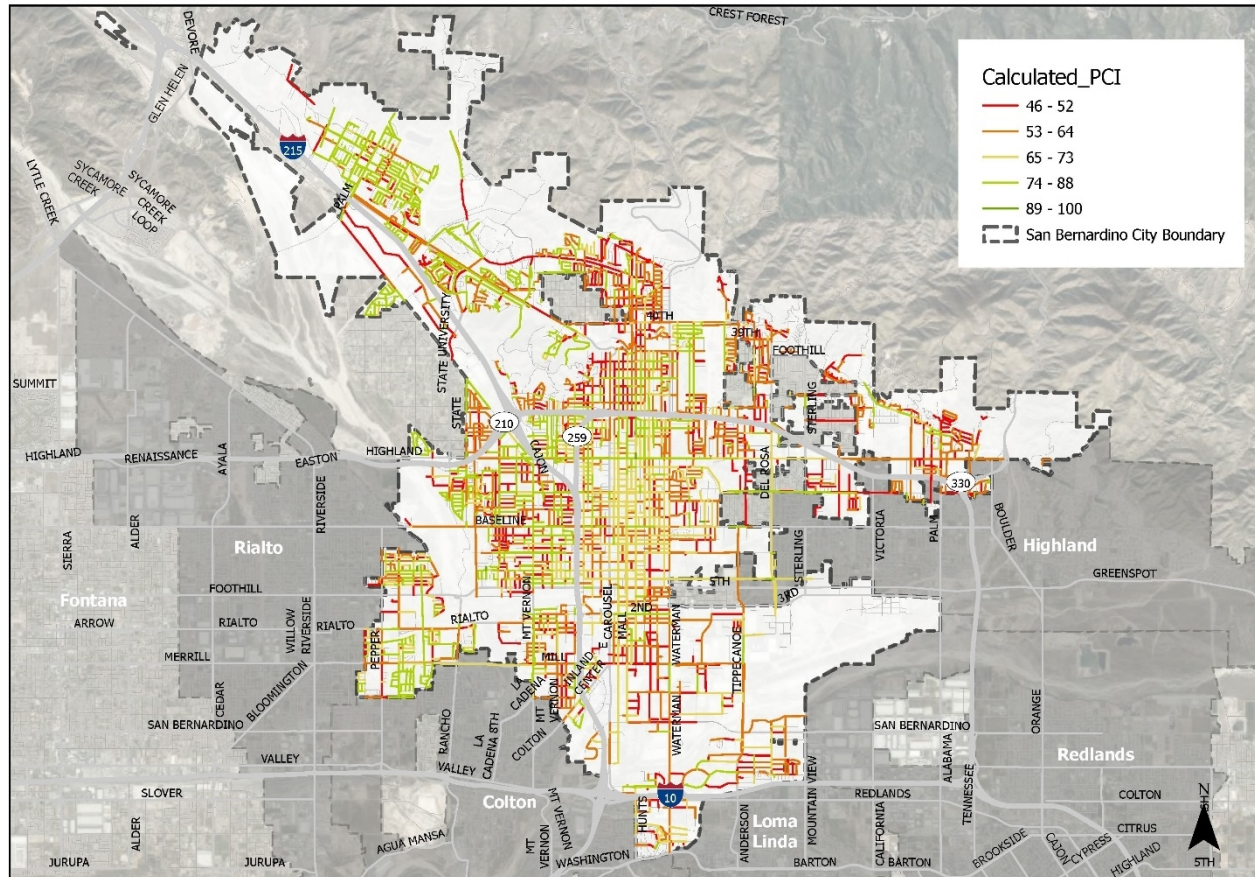


City-Wide Truck Route Study

Analysis Element – Land Use



Analysis Element – Pavement Conditions





Implementation Items

Municipal Code Revision

*Signage Plan –
Routes / End of Route*

*Incorporate into General Plan
Update*

Enforcement

Project Report and Implementation

Truck Route Study Document

- Details regulatory framework
- Provides analysis details
- Summarizes characteristics of each truck route segment
- Truck route segment analysis
 - Roadway and lane widths
 - Overlap with future bicycle projects
- Implementation framework
- Recommended Code revisions



Recommendations

That the City Council:

- Receive and file an update on the draft Citywide truck route study.



Questions?